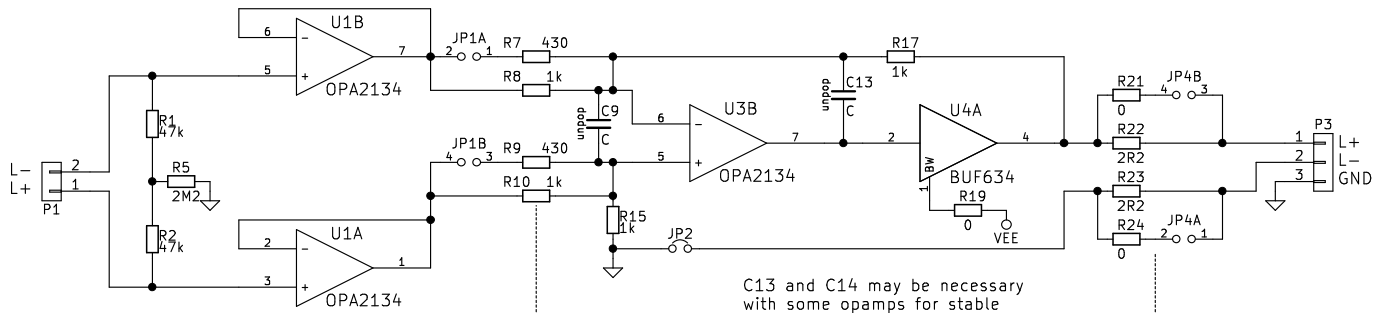


HP Buf



If changing opamp model, consider DC level due to input bias current – especially DC offset.

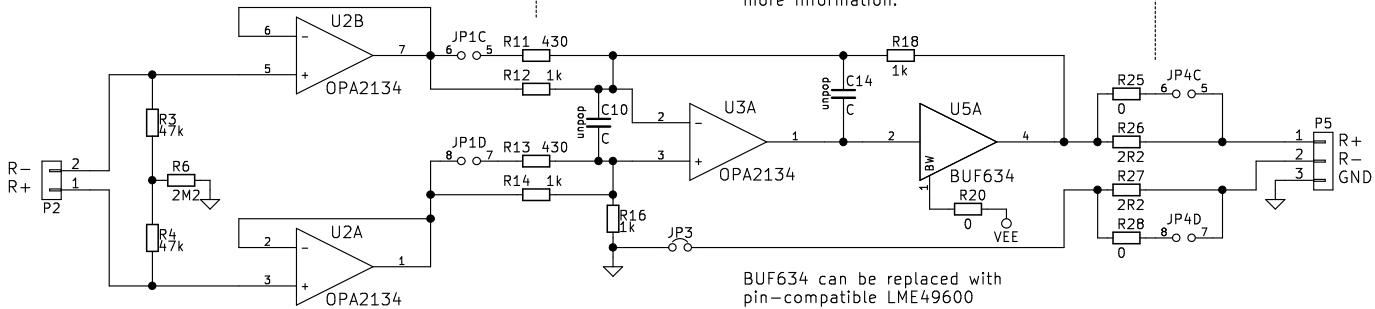
Gain adjustable by jumper link, choose resistors for desired gains

C13 and C14 may be necessary with some opamps for stable operation.

R19 and R20 adjust BUF634 bandwidth.

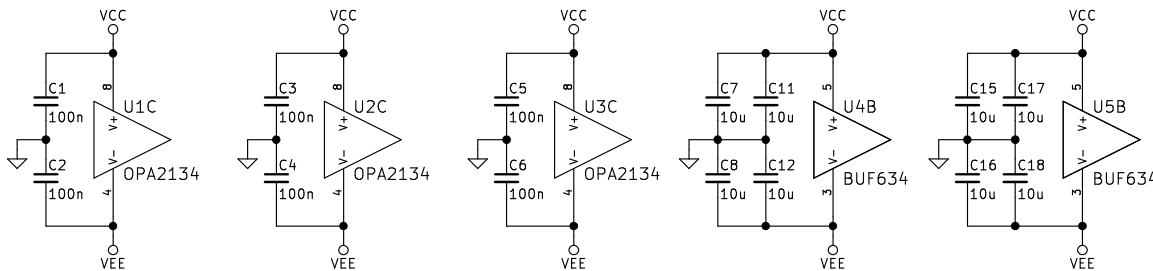
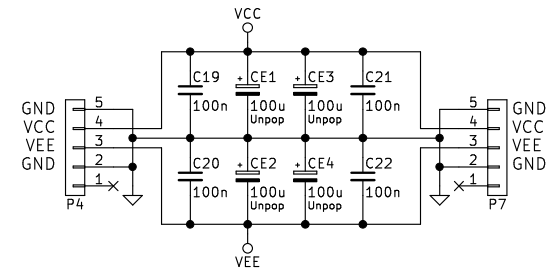
See BUF634 datasheet for more information.

Possibility for jumper-selectable output resistance. BUF634 should be stable with zero ohms.



BUF634 can be replaced with pin-compatible LME49600

Supply connectors



Tomi Nihtila

Sheet: /
File: HP_Buf_v10A.sch

Title: HP Buf

Size: A4 Date: 2017-05-02

KiCad E.D.A. kicad 4.0.7

Rev: v1.0A

Id: 1/1