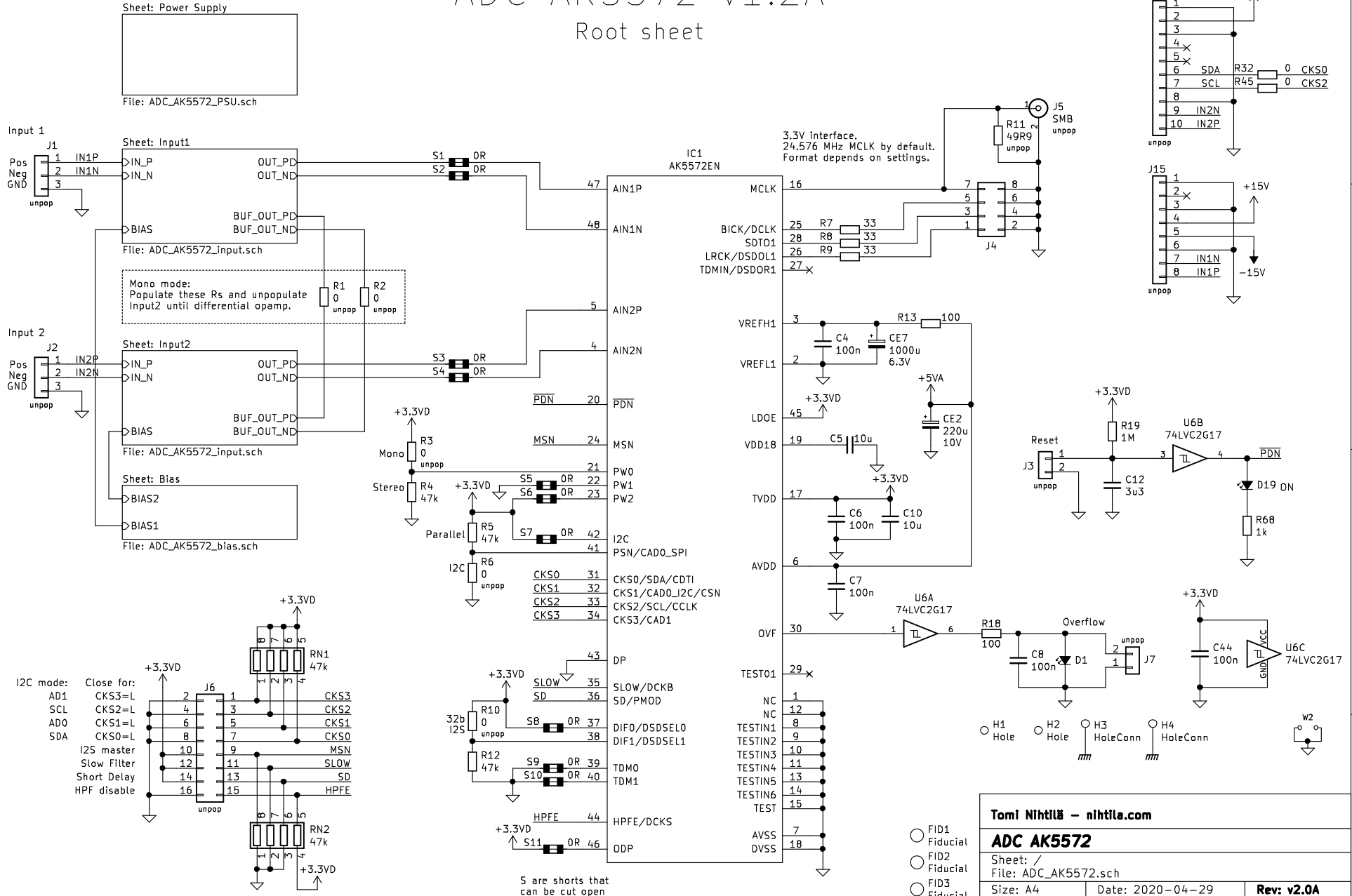


ADC AK5572 v1.2A

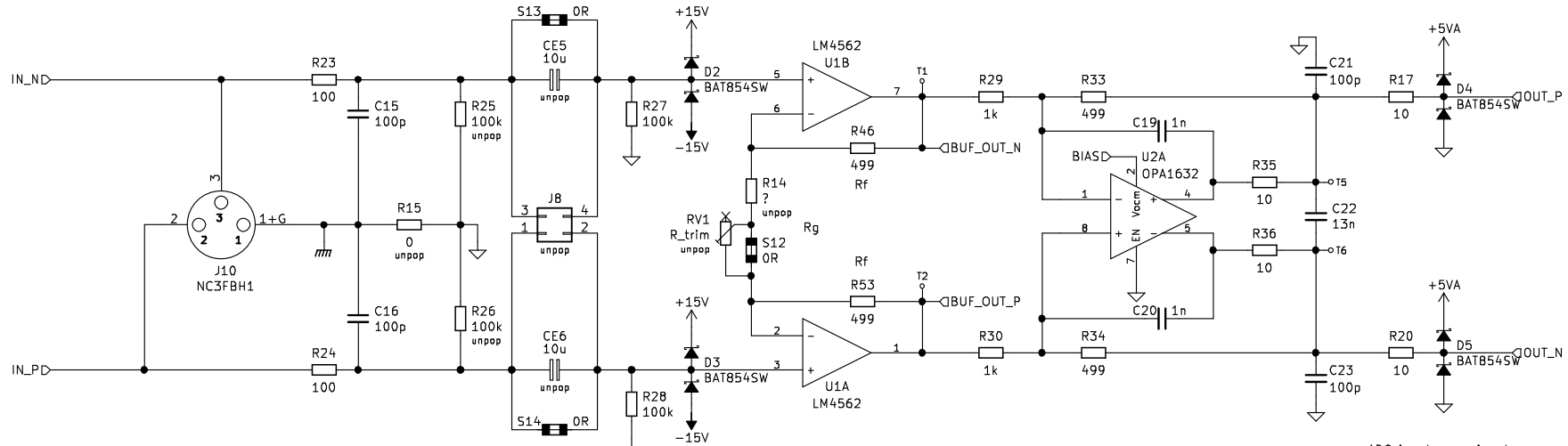
Root sheet



Tomi Nihtilä - nihtila.com			
ADC AK5572			
Sheet: /			
File: ADC_AK5572.sch			
Size: A4	Date: 2020-04-29	Rev: v2.0A	
KiCad E.D.A.	kiCad (5.1.4)-1	Id: 1/5	

ADC AK5572 v1.2A

Input



By default inputs are DC-coupled. To AC couple, break Sx and pop coupling capacitors. Jx can then be used to temporarily DC couple.

INA stage gain = $1 + 2R_f/R_g$
If R14/R16 remains unpop, gain is 1 (0dB).

To use trimmer, break S12/S17 and pop R14/R16.

Trimmer is below XLRs on bottom side so it can be accessed via hole in rear panel if needed.

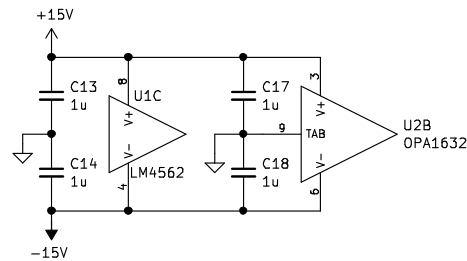
Differential stage gain is 0.5 (-6dB) with default values.

With INA gain 0dB and diff stage gain -6dB, 0dBFS level is 4Vrms.

ADC input max signal is 2.8Vpp with 2.5V DC.

Absolute maximum is -0.3V to 5.3V.

This clamp is not super robust as 5VA cannot sink much current.



Tomi Nihtilä (nihtila.com)

ADC AK5572

Sheet: /Input1/
File: ADC_AK5572_input.sch

Size: A4 Date: 2020-05-14

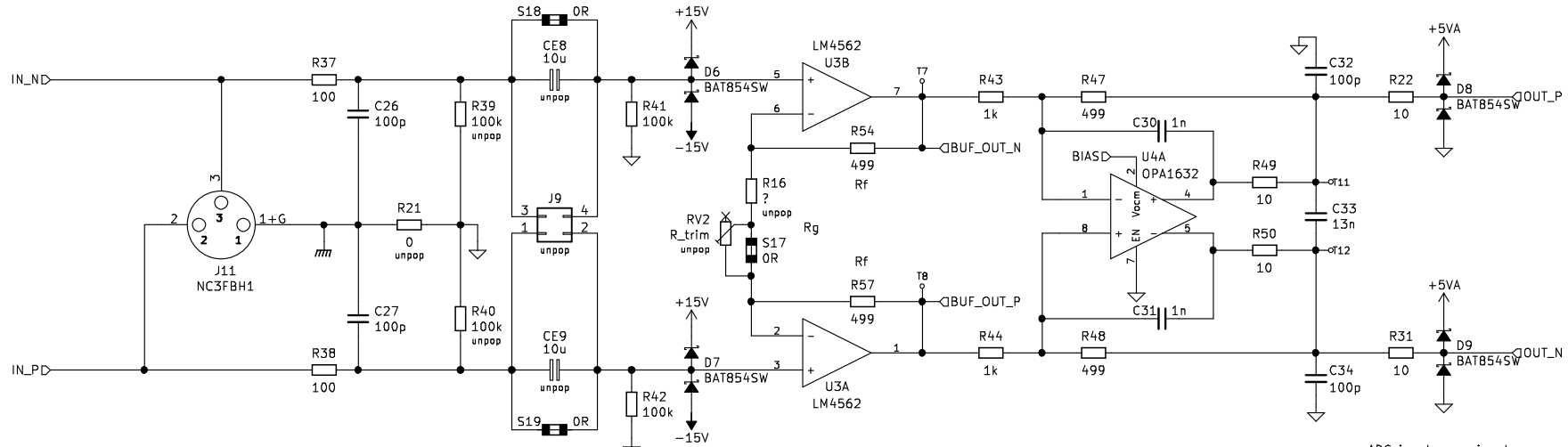
Rev: v1.2A

KiCad E.D.A. kicad (5.1.4)-1

Id: 2/5

ADC AK5572 v1.2A

Input



By default inputs are DC-coupled. To AC couple, break Sx and pop coupling capacitors. Jx can then be used to temporarily DC couple.

INA stage gain = $1 + 2R_f/R_g$
If R14/R16 remains unpop, gain is 1 (0dB).

To use trimmer, break S12/S17 and pop R14/R16.

Trimmer is below XLRs on bottom side so it can be accessed via hole in rear panel if needed.

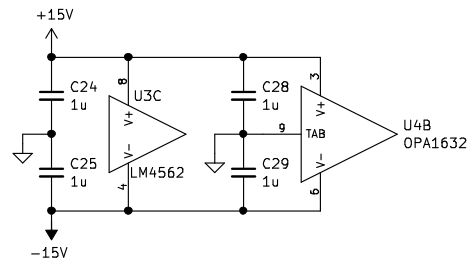
Differential stage gain is 0.5 (-6dB) with default values.

With INA gain 0dB and diff stage gain -6dB, 0dBFS level is 4Vrms.

ADC input max signal is 2.8Vpp with 2.5V DC.

Absolute maximum is -0.3V to 5.3V.

This clamp is not super robust as 5VA cannot sink much current.



Tomi Nihtilä (nihtila.com)

ADC AK5572

Sheet: /Input2/
File: ADC_AK5572_input.sch

Size: A4 Date: 2020-05-14

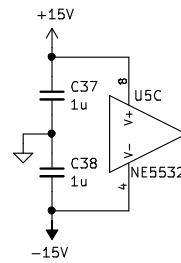
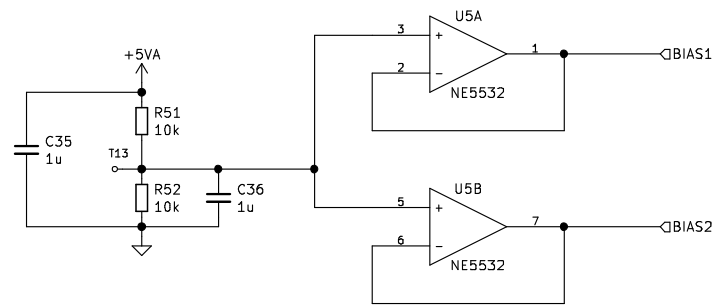
Rev: v1.2A

KiCad E.D.A. kicad (5.1.4)-1

Id: 3/5

ADC AK5572 v1.2A

Bias



Tomi Nihtilä (nihtila.com)

ADC AK5572

Sheet: /Bias/
File: ADC_AK5572_bias.sch

Size: A4

Date: 2018-12-09

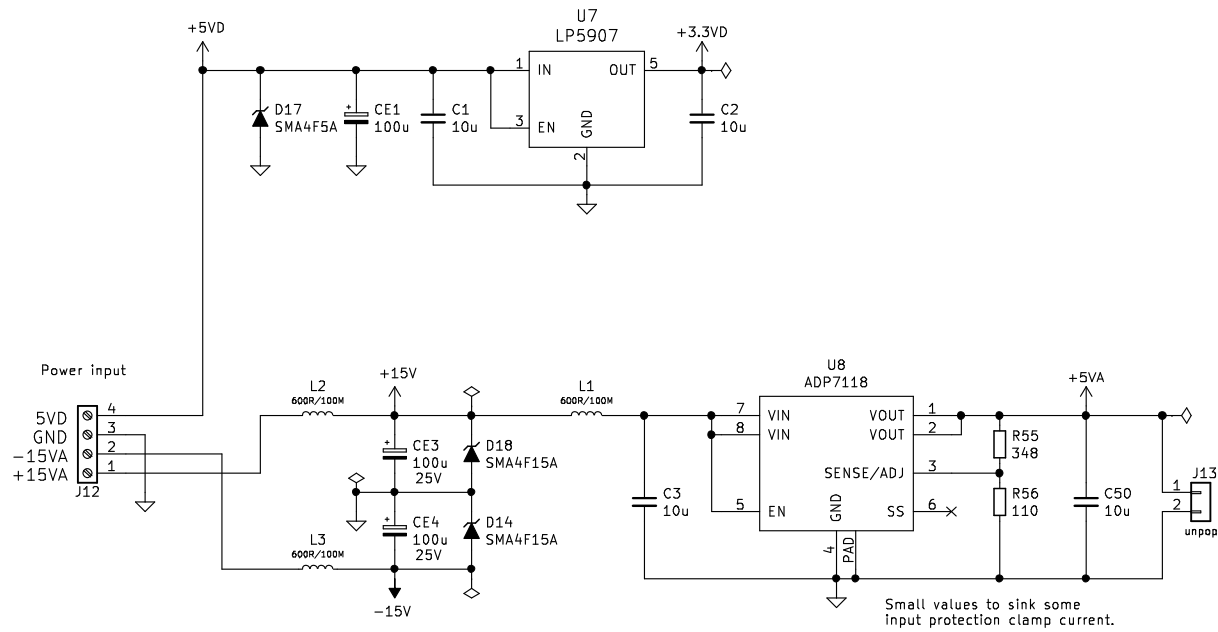
Rev: v1.0A

KiCad E.D.A. kicad (5.1.4)-1

Id: 4/5

ADC AK5572 v1.2A

Power Supply



Sheet: /Power Supply/		
File: ADC_AK5572_PSU.sch		
Size: A4	Date:	Rev:
KiCad E.D.A.	kiCad (5.1.4)-1	Id: 5/5