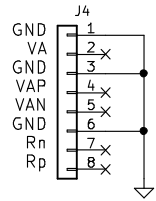
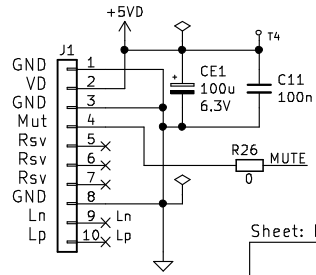
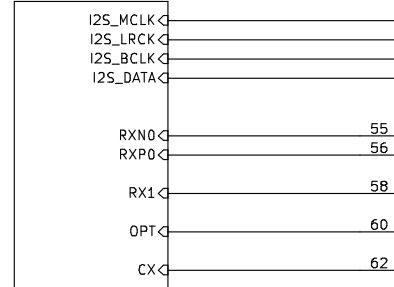


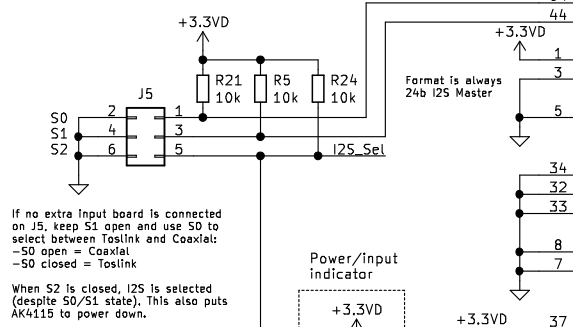
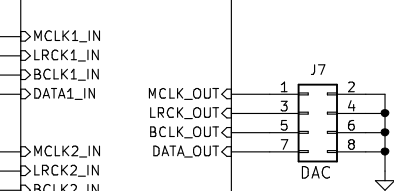
W-Input v1.3A



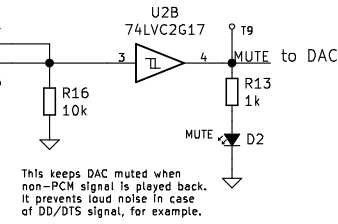
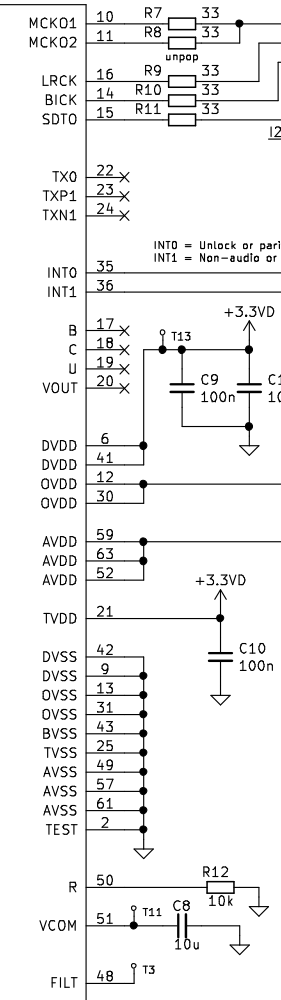
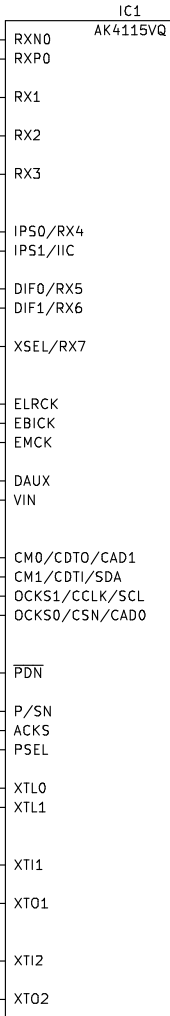
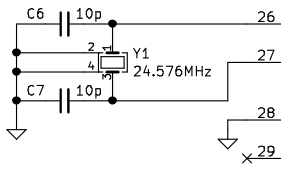
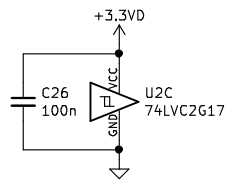
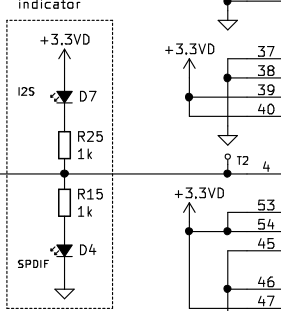
Sheet: Inputs



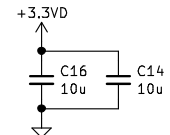
Sheet: I2S Switch



Power/Inpu indicator

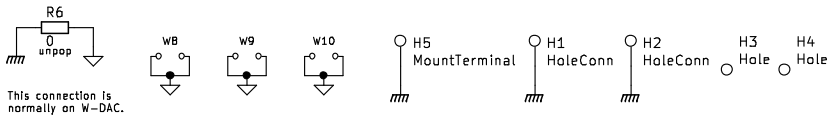


Notes:
-No control for de-emphasis in HW-mode, status is defined by input stream status bit.



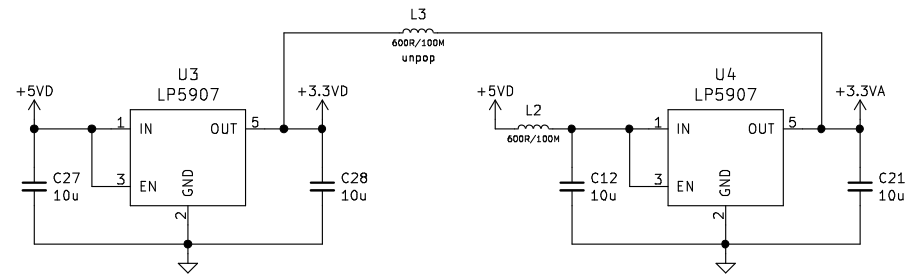
- FID1 Fiducial
- FID2 Fiducial
- FID3 Fiducial

Tomi Nihtilä - nihtila.com		
W-Input		
Sheet: /		
File: W-Input_v13A.sch		
Size: A4	Date: 2019-07-31	Rev: v1.3A
KiCad E.D.A.	kiCad (5.1.4)-1	Id: 1/4



W-Input v1.3A

Power Supplies

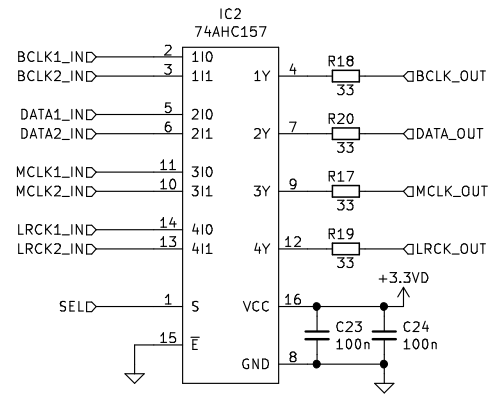


Sheet: /Power Supplies/ File: W-Input_PSU.sch		
Size: A4	Date:	Rev:
KiCad E.D.A.	kiCad (5.1.4)-1	Id: 2/4

W-Input v1.3A

I2S Switch

5V tolerant inputs

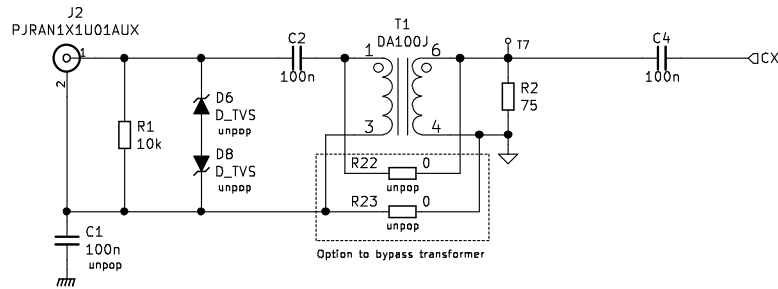
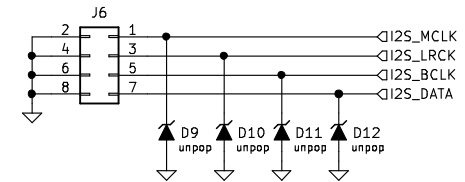
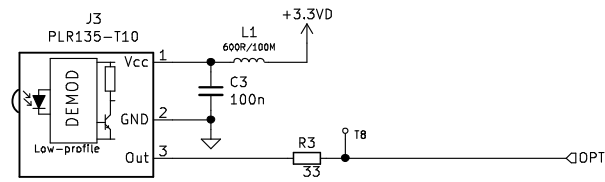


Sheet: /I2S Switch/
File: W-Input_I2S_switch.sch

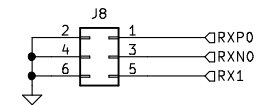
Size: A4	Date:	Rev:
KiCad E.D.A.	kiCad (5.1.4)-1	Id: 3/4

W-Input v1.3A

Inputs



For input extension board



Sheet: /Inputs/ File: W-Input_Inputs.sch		
Size: A4	Date:	Rev:
KiCad E.D.A.	kiCad (5.1.4)-1	Id: 4/4